

# **Thor Trade Copier**

## **Documentation**

# Summary

**I) What is Thor?**

**II) Target market / Typical customer profile**

**III) Analysis of main competitors**

**IV) Presentation of the interface and the software**

**V) List of useful links**

**VI) Non-exhaustive list of influencers in the field**

# Presentation of Thor

Thor Trade Copier is a trade copier operating on the Futures markets and, to a lesser extent, on CFDs.

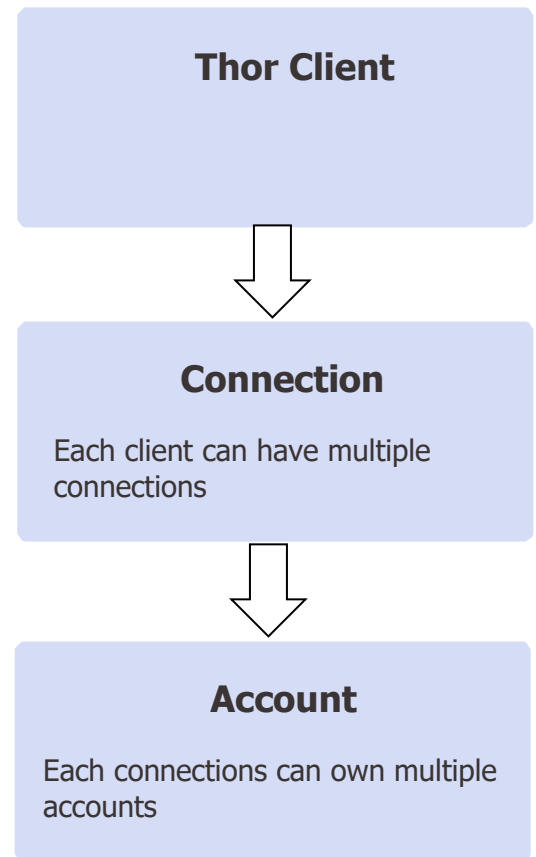
Futures/CFDs are types of financial markets; here we will mainly focus on Futures.

A trade copier is software (in the case of Thor: a Windows program *and* a web application) that allows the user to copy trades from one trading account A to one or several accounts B, C, D, etc.

Throughout this document, we will refer to three levels of detail that are essential to understand.

- The Thor **Client** represents what is purchased by the customer; this is what we sell. Through a license, this client grants access to the software and contains all of the user's information and actions.
- The **Connection** is, for a Thor Client, the link between the user and the external platform where the account is hosted. To use Thor, the client must have at least one connection; otherwise, the software is useless. Connections are not specific to Thor, nor are they generated by Thor—the user simply logs in with their credentials/passwords, which are different for each connection.
- The **Account** derives directly from the Connection. For example, if I register with a broker or a prop firm, they will provide me with login credentials (the Connection). Then, on Thor, I will have access to the full list of accounts linked to that Connection. An account always has a balance in USD and a specific identifier. Each Connection can potentially contain an unlimited number of accounts.

We will return to this later in the document, but the main points of comparison between different trade copiers are as follows:



- How quickly are trades copied?
- Are trades copied efficiently? (few copying errors, etc.)
- Am I limited in terms of the number of accounts I can copy, the number of connections I can add, or the number of devices on which I can install the software with my license?
- Which “datafeeds” can I connect to? A datafeed is a company that provides accounts. For Futures prop firms, there are four main feeds:
  - o dxFeed
  - o Rithmic
  - o ProjectX
  - o Tradovate
- What is the price? Is it a one-time payment or recurring? (This is a very important point—much more so than in other markets, as many people find trade copiers very, sometimes too, expensive.)
- What happens if I encounter a problem? How long does it take to get a response from support, and is it effective?

Finally, a word on the creation of Thor. Thor was developed by the team at Phoenix Trader Funding (<https://phxtf.com>); Phoenix is a Futures prop firm and, as such, had an internal need for trade copying. Thor was initially developed as Phoenix’s internal trade copier. As additional features were added, combined with the growing demand for this type of product and the increasing fixed server costs, the internal project eventually evolved into a standalone company.

# Target Markets and Priority Segments



## Futures Prop Firms

### What is a “Futures Prop Firm”?

A “Futures Prop Firm”, is a company whose role is to provide funding to individual traders. Essentially, the firm trades on the basis of the trader’s skills in exchange for financial capital: the individual trader trades on behalf of the firm and receives financial compensation proportional to their profits.

More concretely, a client of a prop firm will purchase what is called a “trading test.” Once purchased, the client receives credentials for one of the four previously mentioned datafeeds (the **Connection**) and gains access to an **Account** corresponding to the one bought on the site.

There are different account sizes, generally ranging from \$25,000 to \$250,000. These accounts do not represent real money; they are simulated funds, but with a real-time market connection. The idea is to see whether the prop firm client can reach a certain profit threshold on this simulated capital.

If successful, the client starts over with a second account called a “funded account,” and any new profits generated during this phase can be withdrawn as real money into a bank account. If the client fails—meaning they lose a certain amount—the challenge is lost, and the fee paid for the test is also lost. However, this fee is much lower than the potential financial losses that would have been incurred on the simulated account.

This model offers a clear advantage for the so-called “retail” trader (individual), as it allows them to potentially earn a living from trading based solely on their performance, without having to bear the risk of capital losses. As a result, it serves as an excellent educational tool and has become almost a mandatory step for traders today, given the positive impact this model has on their development.

## **What is the connection with Thor?**

In the world of Prop Firms, one detail is extremely important to consider: the diversity of rules. Indeed, although all prop firms follow the general model described earlier, each has its own specific rules—whether regarding the trading test, the requirements for profit withdrawal, or other conditions.

For this reason, it is very common for a prop firm client to not put all their eggs in one basket and trade simultaneously with 2, 3, or even 4 different firms. This is precisely where the use of Thor becomes essential: it connects multiple Futures prop firms, which operate under the same model but with slightly different rules.

This market is experiencing rapid growth, with a 1000% increase since 2020. The same is true for trade copiers like Thor, which are very new but highly sought after.

.

# Typical Profile of Target Clients

## Demographic Characteristics

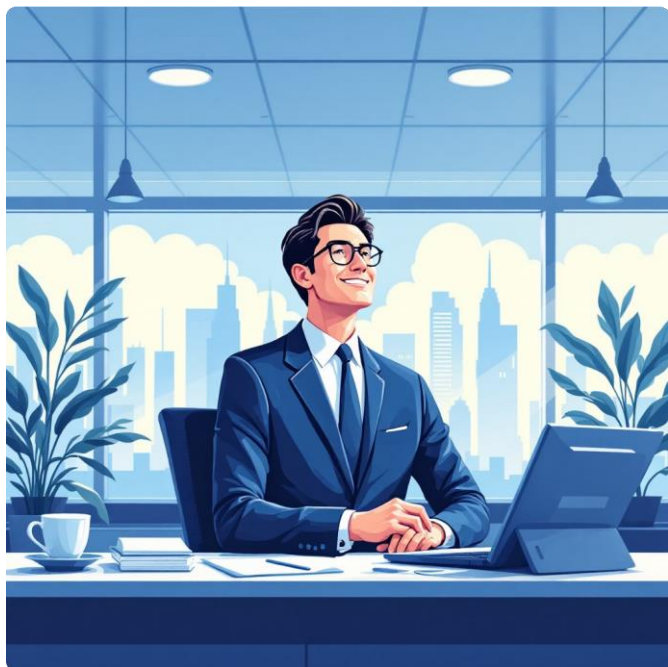
### Financial Experience

Two Different Profiles

- Beginners looking to experiment with multiple Prop Firms, with 0 to 6 months of experience.
- Experienced traders at the other end of the spectrum, who manage a large number of accounts (20+ different accounts).

### Which datafeeds do they use?

The majority of traders use the "Tradovate" feed, followed by Rithmic, then dxFeed, and finally ProjectX.



## Purchase Motivations

- Trading on multiple Prop Firms simultaneously
- Better risk management (using several smaller accounts instead of a single large account)
- Other copiers do not support the required datafeed
- Risk reduction through diversification

The typical Thor Trade Copier client is an individual interested in the financial sector and prop firms, either as a concept or, at the other end of the spectrum, with extensive experience in them. They are generally 18 to 30 years old and 75% of the time male.

These clients are primarily motivated by the ease of use that Thor provides. This notion of "easy setup" must always be coupled with reliability.

# Competitive Analysis – Overview

The copy trading and automated trading solutions market is experiencing exponential growth, with numerous players offering a variety of approaches. This comparative analysis helps identify the unique positioning of Thor Trade Copier relative to the main alternatives in the market.

Features	 Thor™	 Replikanto	 ETP TradeCopier	 Tradesyncer
Cross Trading	✓	✓	✓	✓
Number Of Machines	∞	1 to 2	1	∞
Number Of Connections	∞	∞	1 (others available with addon)	2 (basic plan) to unlimited (flex plan)
Number Of Accounts	∞	∞	∞	10/Connection (basic plan) to 120 (flex plan)
Working Remotely	Included	Paid Addon	✗	Included
Platforms	All Rithmic Platforms All dxFeed Platforms All ProjectX Firms All cTrader Firms All Tradovate Firms All NinjaTrader Firms All Tradingview Firms	All Ninjatrade firms All Tradovate firms	All Rithmic Platforms All Ninjatrade firms All Tradovate firms	All Rithmic Platforms All dxFeed Platforms All Tradovate Platforms + others
Built-In TP / SL	✓	✗	✗	✓
Max. Size Limit	✓	✗	✗	✗
Multi-Broker Support	✓	✗	✓	✓
Economic Calendar	✓	✗	✗	✓
Advanced Trade Analysis	✓	✗	✗	✗
Advanced Trade Logging	✓	✗	✗	✗
Minimum Price	<del>\$\$\$</del> <b>\$23.40</b> 1 MONTH UNLIMITED MACHINES (Includes the 50% Phoenix Exclusive Discount)	<b>\$149</b> 1 YEAR 1 MACHINE	<b>\$236</b> LIFETIME 1 MACHINE	<b>\$49</b> 1 MONTH 2 CONNECTIONS

## **Direct Competitors**

Tradesyncer

ETP Tradecopier

Replikanto

## **New Entrants**

Tradecopia

The players in the market are therefore very limited, with only a handful of competitors. Among them, Tradecopia is the most recent, Tradesyncer the most modern and an immediate threat due to the similarity of their service to Thor's. They also benefit from significant support from other "prop firms." ETP Trade Copier is an excessively expensive competitor, and Replikanto is by far the oldest, but also one of the copiers that many users are looking to replace, as they complain about its constant disconnections.

# Detailed Competitive Positioning



## Thor's Competitive Advantages (in descending order)01

---

### Connectivity to all Futures feeds

We are the only copier, along with Tradesyncer, to have connections to all feeds.

02

---

### Unlimited number of accounts/connections/machines

Unlike other copiers that set a maximum limit on accounts, Thor imposes no such restriction.

03

---

### The price

Thor is available at \$39/month, which is three to four times cheaper than direct competitors, with no commitment, and a 14-day free trial (compared to the 7-day average offered by competitors).

04

---

### One of the highest copying speeds

Thor takes an average of 17 milliseconds to copy a trade, six times faster than the blink of an eye.

05

---

### Integration with partners

Once users have executed their trades, they can analyze them using our partnerships with the software tools 'Phoenix Instant Logger' and 'Deltalytix'.

<b>Criterion</b>	<b>Thor Trade Copier</b>	<b>Tradesyncer</b>	<b>Replikanto</b>
Connectivity	+++	+++	+
Stability (current state)	+	++	++
Trade analysis	+++	++	+
Price	+++	+	++

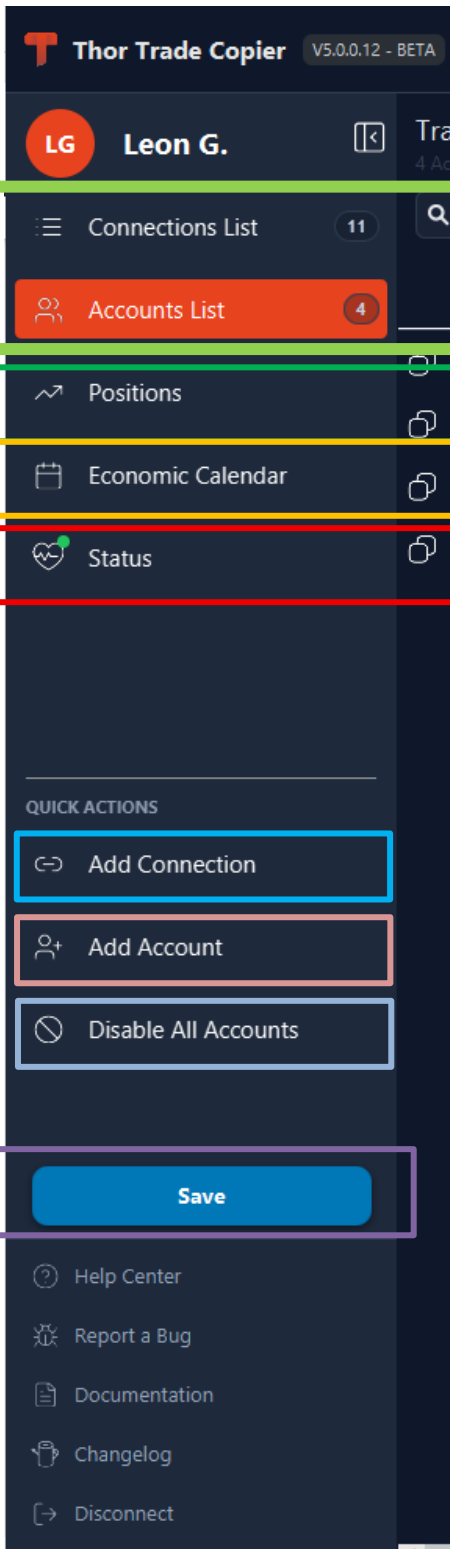
Beyond analyzing competitors, it is clear that the available market is substantial. Aside from stability, which is currently an area for improvement for Thor, the software's proposition and ambition position it well to become the number one trade copier worldwide.

# Interface Overview

Thor comes in the form of two interfaces, both included in the subscription according to the user's preference. Users can access both interfaces whenever they wish and are not required to choose one over the other.

## I) Windows Software

The first element of the software is the side navigation bar:



Thor operates on a system of two distinct lists: the **Accounts** list and the **Connections** list.

This tab is used to view the user's open and closed positions.

This tab is another feature of Thor, allowing a popup window to appear so users never miss potentially volatile market news.

This page is used to view the application's status and check if everything is running smoothly. It is updated live by the

This button is used to add a **Connection**; it is the **first action a user takes** when launching the software for the first time.

This button is used to add an Account. **It is the third action a user takes.**

This button is used to deactivate or activate all accounts at once. It is useful for users managing a large number of accounts.

The Save button is crucial to the software's operation. The key point to understand is that **this button has two forms**, each performing a different action:

- When the user has selected the 'Accounts List' (as shown in this image), the button is blue.
- When the user has selected the 'Connections List', the button turns orange, like this:



When the button is orange, **ONLY the Connections** are saved, and **ONLY the Accounts** are saved when the button is blue.

## Now, here is a full view of Thor's Windows interface (Accounts List).

Activated	Leader ID	Follower ID	Lev...	Stop Loss	Take Profit	Auto Li...	Dis. Mic...	Reversed?
<input checked="" type="checkbox"/> Active	PHX00100	PHX00120	1.3	-1000.0	1000.0	<input type="checkbox"/> Inactive	<input type="checkbox"/> Inactive	<input type="checkbox"/> Inactive
<input checked="" type="checkbox"/> Active	DEMOS412751	DEMOS409103	1.3	-1000.0	1000.0	<input type="checkbox"/> Inactive	<input type="checkbox"/> Inactive	<input type="checkbox"/> Inactive
<input checked="" type="checkbox"/> Active	DEMOS412751	DEMOS408981	1.3	-1000.0	1000.0	<input type="checkbox"/> Inactive	<input type="checkbox"/> Inactive	<input type="checkbox"/> Inactive
<input checked="" type="checkbox"/> Active	DEMOS412751	DEMOS408960	1.3	-1000.0	1000.0	<input type="checkbox"/> Inactive	<input type="checkbox"/> Inactive	<input type="checkbox"/> Inactive

This section displays, respectively: Thor's connectivity status (same as the 'Status' page), the current state of the financial markets, and the user's local time.

Each row corresponds to a different copied account. In this example, the user has four different trading configurations.

The figure 1.3 here refers to the copier's multiplier. In practical terms: in this configuration, if the user places a trade on the 'PHX00100' account, also called the 'Leader Account,' it will also be replicated on the 'PHX00120' account with a quantity equal to 1.3 times the original amount.

Additionally, a 'Stop Loss' and 'Take Profit' are present. Thor can monitor a account's losses and gains and update this value in real time. Therefore, the user can—and should—set thresholds for losses and gains, beyond which Thor will close all open positions on the Follower account and cancel all pending orders. This process is called 'Liquidation.'

The 'Auto Liquidate Leader' column allows the Leader account to be liquidated as well during the Follower's liquidation process.

The first button, green, provides access to 'Mapping,' which is not intended for use. The second button allows access to Trade Optimization (see below).

This button provides access to an AI support system containing all available knowledge about Thor, and/or allows users to request human support based on their inputs.

## Même chose pour la liste des Connexions

The screenshot shows the 'Connections List' interface in Thor Trade Copier. The table contains the following data:

Active?	Custom Name	Account ID / ...	Passwo...	Server	Vendor	Status	Reason
Active	123456	*****	*****		Phoenix Trader Funding	-	
Reconnect	TRDV_ThorTest3	*****	*****		Tradovate	Failed	Tradovate auth f
Active	TRDV_ThorTest4	*****	*****		Tradovate	Connected	(as of 2025-09-1
Inactive	LT-NG929YY5	*****	*****	LucidTrading Chicago ...	Lucid Trading	-	
Inactive	cTrader	*****	*****		cTrader	-	
Reconnect	Tradovate Tutoriel1	*****	*****		Tradovate	Failed	Tradovate auth f
Inactive	TopstepX	*****	*****	TopstepX	ProjectX	-	
Inactive	dranju123@gmail.com	*****	*****	TopstepX	ProjectX	-	
Reconnect	TRDV_ThorTest2	*****	*****		Tradovate	Failed	Tradovate auth f
Inactive	op	*****	*****	Top One Futures	ProjectX	-	
Inactive	TRDV_ThorTradeCopier	*****	*****		Tradovate	-	

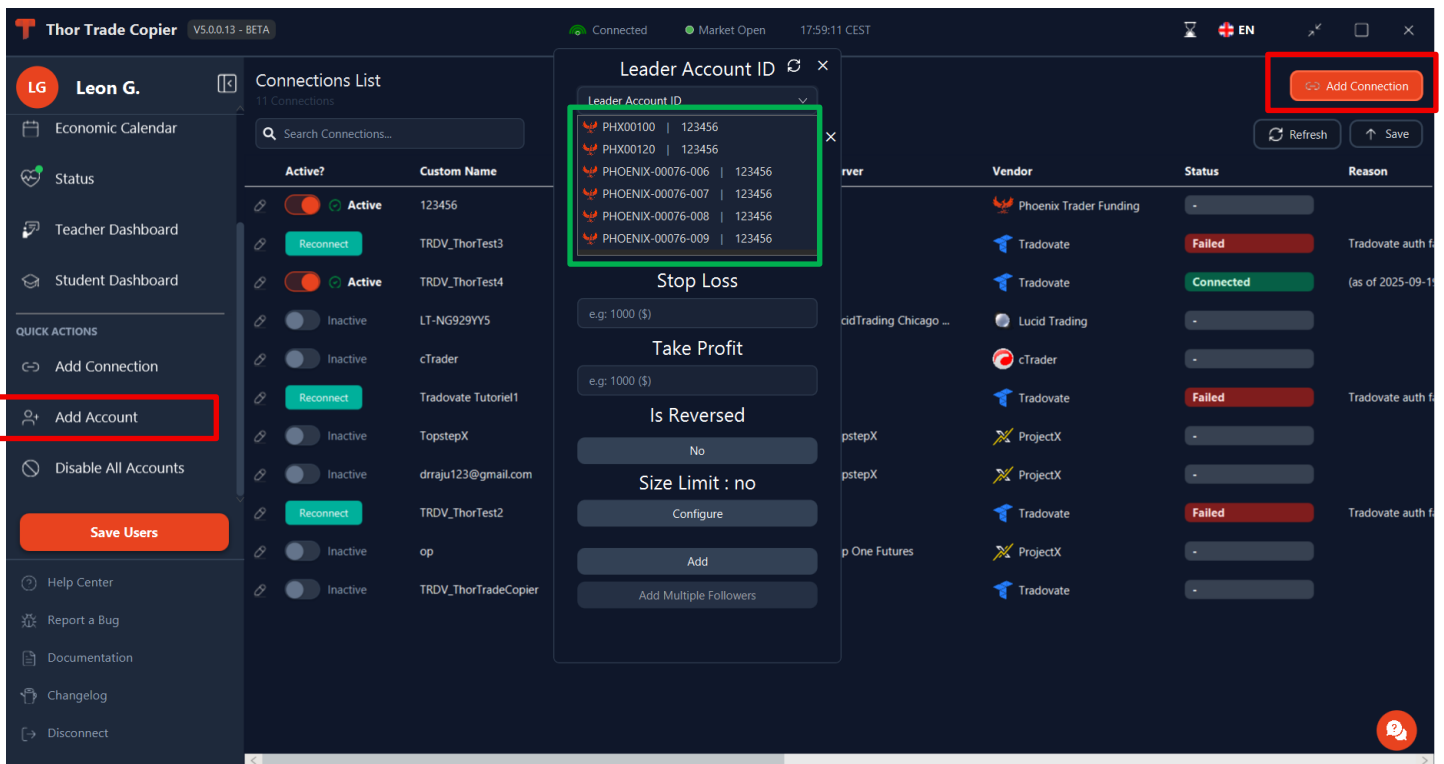
As with Accounts, each row represents a different Connection, with several elements (from left to right):

- A button to activate or deactivate the Connection.
- The user-defined name of the Connection, serving primarily as a reference for the user.
- The ID and password, provided by the prop firm or Broker account.
- The server on which the account is hosted, also provided.
- The feed or firm name where the Connection is hosted. For example, Phoenix Trader Funding is a 'prop firm,' while Tradovate is a feed.
- Finally, the current status (Connected, Connecting, Connection Failed), along with the reason for any failure.

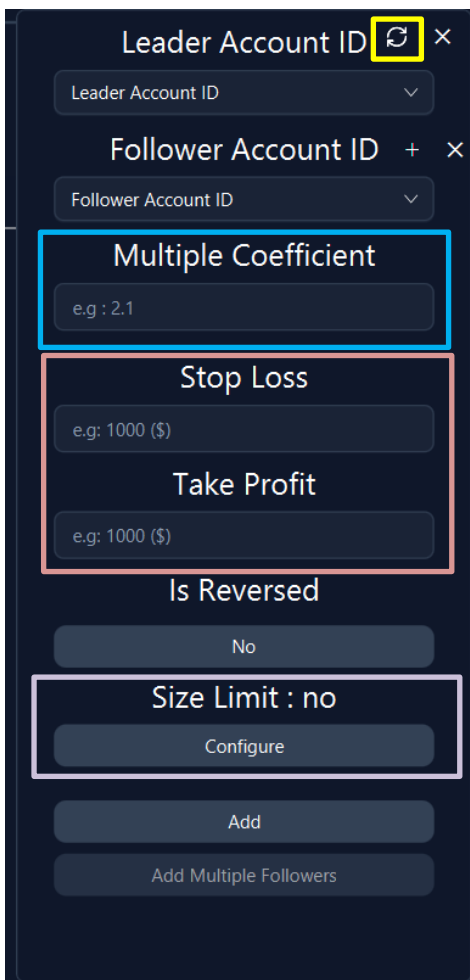
The 'Add Connection' button is used to add a new Connection (see below). The 'Save' button has the same effect as the 'Save Users' button at the bottom left. The 'Refresh' button updates the status of the accounts with the latest available information.

Once the user has finished modifying or adding Connections, it is essential to click 'Save Users' to save the configuration and to initiate the connection process with the defined settings.

During this process, Thor connects the accounts one by one and updates the status on each corresponding row. It then retrieves all available Accounts across all Connections and presents them to the user in the following interface.



This interface is accessed by clicking either of the 'Add Account' buttons and allows users to manage the copy configuration. At least one Connection must be added and saved beforehand in order to use this interface. If no Connection has been added, the Accounts list (green) will display 'No trading accounts available.'



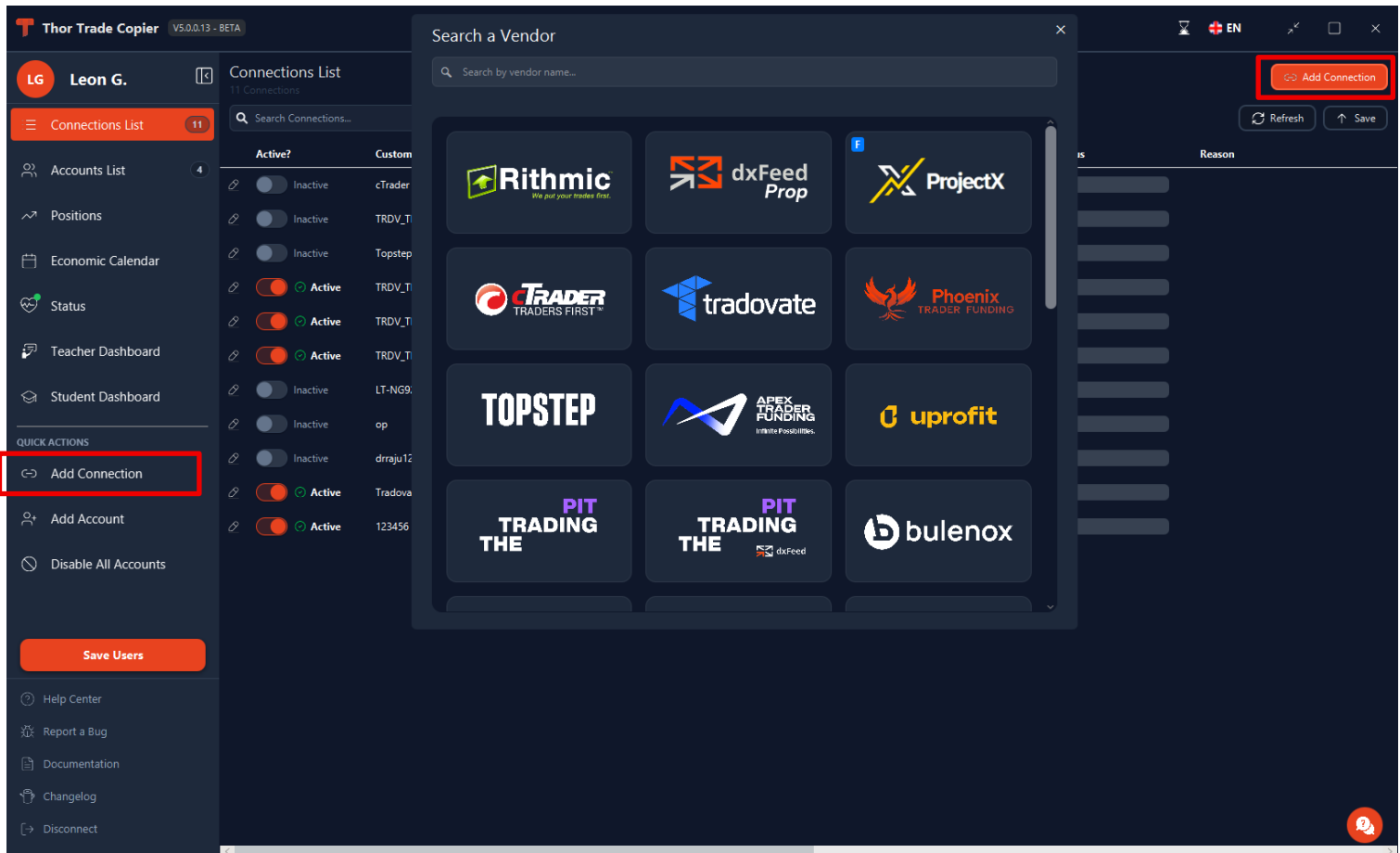
"This list represents the user's available Accounts, combining all **Accounts** across all **Connections**. It is used in two places within this interface: to define the 'Leader' account and to define the 'Follower' account.

This button is used to refresh the Accounts list.

This field is used to set the leverage applied to the 'Follower' account. A leverage of 1 means that for a trade of 1 contract placed on the Leader account, 1 contract will be replicated on the Follower account. A leverage of 2 means that a trade of 1 contract on the Leader is doubled on the Follower account. This field also supports decimal leverage values, such as x1.2 or x0.4. In this case, Thor can manage the orders to achieve the exact desired leverage.

These fields are used to set the Stop Loss and Take Profit for the account.

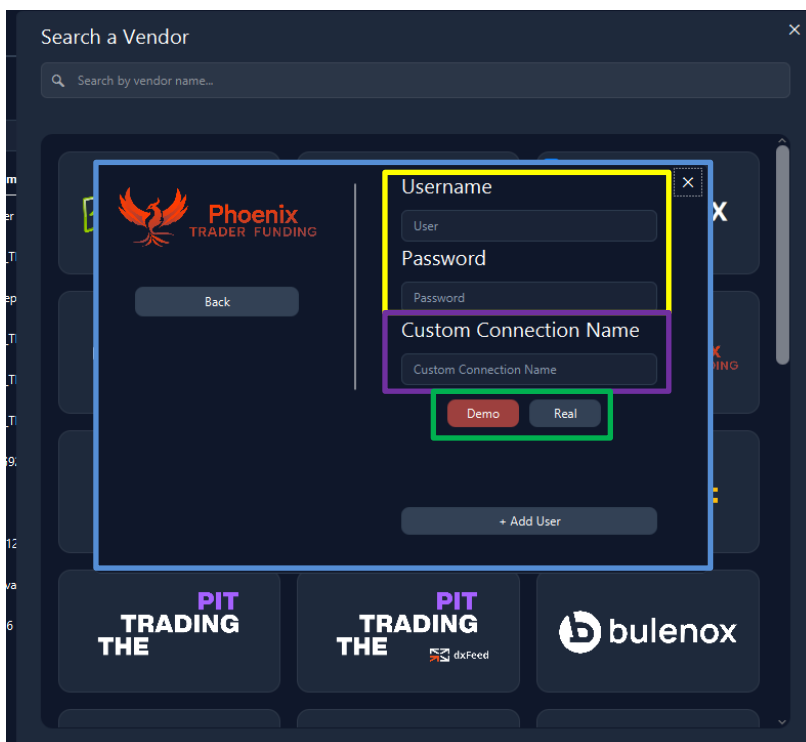
This button allows users to set a maximum cumulative position size on the Follower account. In practice, it is rarely used.



This interface is accessed by clicking either of the 'Add Connection' buttons and allows users to select the Broker or prop firm they have. As mentioned earlier, Thor supports the following connections:

- Rithmic
- dxFeed
- ProjectX
- Tradovate

Thor also supports connections from cTrader. cTrader is a CFD broker, not a Futures broker. Thor is therefore the first trade copier capable of truly linking a Futures account with a CFD account

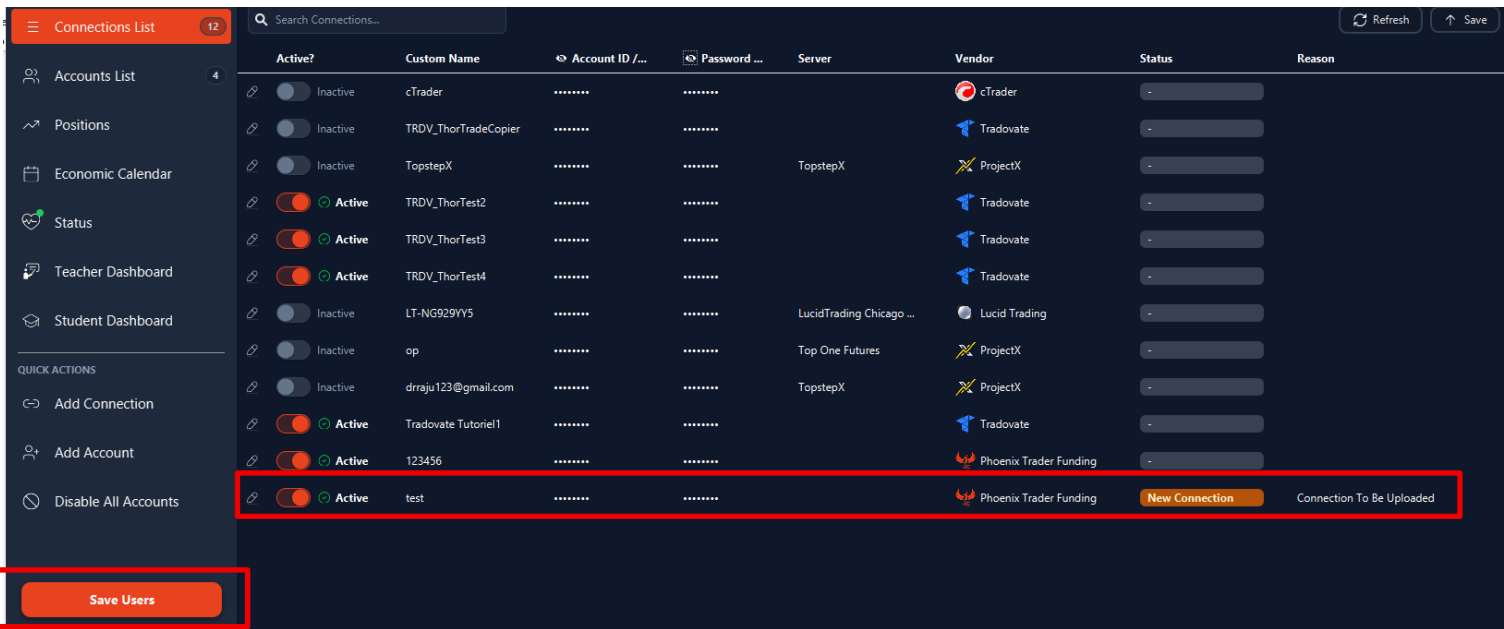


If the user selects a provider, they are then presented with this interface.

These fields are used to enter the credentials provided by the prop firm.

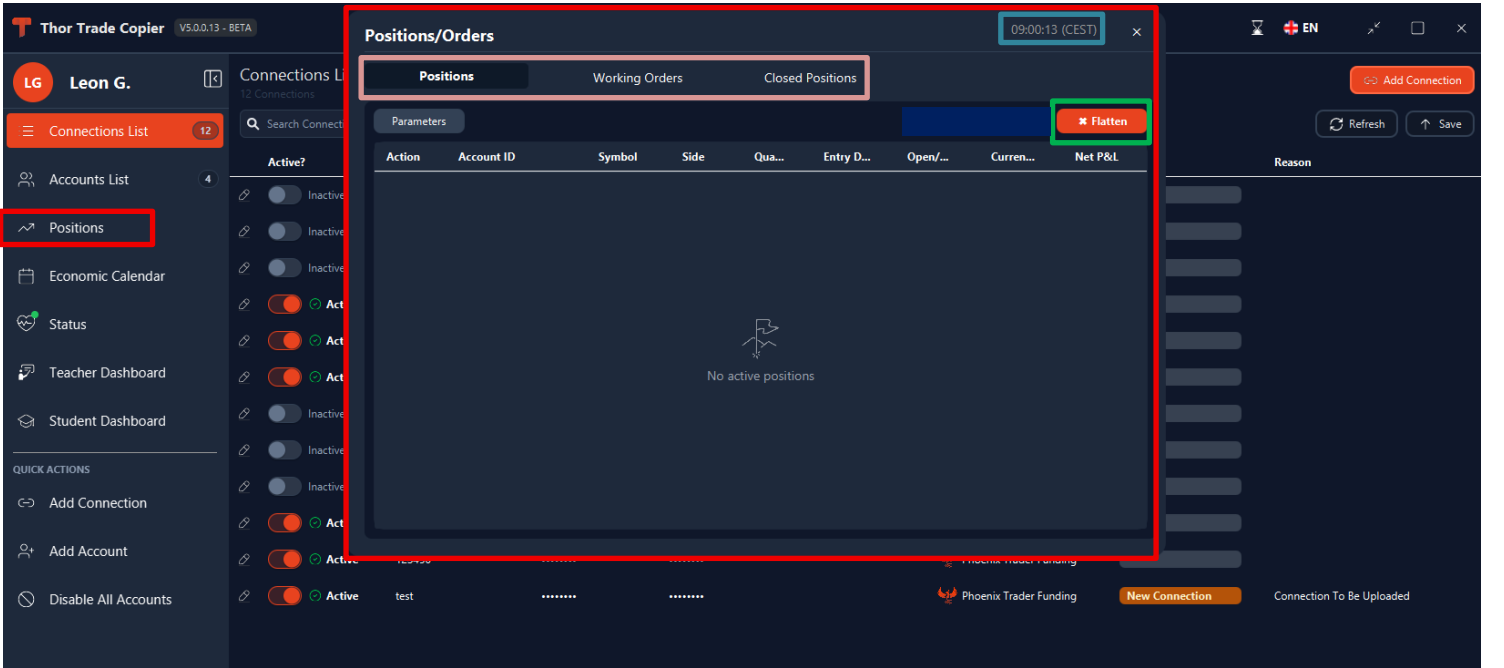
The user can set a custom name for each Connection.

This field appears only for dxFeed. 'Demo' is for prop firms, while 'Real' is for a live account with real money.



Once a Connection is added, its status changes to 'To Be Uploaded.' At this point, it is necessary to click the 'Save Users' button to save the Connection.

The final important element of the interface is the 'Positions' tab.



This window lists all open positions, unexecuted orders, and closed positions.

This button closes all positions across all accounts.

This bar allows navigation between positions, orders, and closed positions.

This time is the one provided by the server. If it is not updating, it means the server is no longer sending information, indicating a problem.

## II) Website

The website is available at <https://app.thortradecopier.com>. It functions similarly to the Windows software, with a few minor differences; therefore, this section will be shorter than the previous one.

An important point to note concerns the availability of both interfaces (Windows + Web). When a user purchases Thor, they do not have to choose—they have access to both interfaces, using the same login credentials for each, with unlimited usage.

The screenshot displays the web interface for ThorTradeCopier. The user is logged in as Leon G. The main dashboard area is titled 'Overview' and provides a quick snapshot of the account. Key information includes the account status (active), the next renewal date (06/10/2025 20:47:00), and the current billing amount (1,00 \$US). A 'Subscription Summary' table provides a breakdown of account metrics: 11 users, 4 accounts, 5 active connections, and 5 vendors used. A 'Quick Actions' section offers a 'Download for Windows' button and a link to contact support. The left sidebar contains various navigation options, including System Status, Connections List, Accounts List, Positions, Trade Analysis, Economic Calendar, Billing, and Download. A 'Save' button is located at the bottom left of the sidebar.

This 'Overview' section is currently exclusive to the web version. It displays the number of Connections, the number of 'vendors' (i.e., different Brokers), and the subscription status (trial active, active subscription, etc.).

This section allows users to quickly download the software at <https://thortradecopier.com/download>.

Leon G. EN

- Overview
- System Status
- Connections List
- Accounts List
- Positions
- Trade Analysis
- Economic Calendar
- Billing**
- Download

Save

Help Center

Report a Bug

Logout

Asia Asia Closed (Weekend) Opens in 13h 57m

## Billing

Manage Subscription

Invoice	Date	Amount	Status	
NLSIDGPQ-0296	06/09/2025 21:47:26	30,00 \$US	open	<a href="#">View</a>
NLSIDGPQ-0297	06/09/2025 21:52:02	1,20 \$US	open	<a href="#">View</a>
NLSIDGPQ-0295	06/09/2025 21:46:59	0,00 \$US	paid	<a href="#">View</a>
NLSIDGPQ-0294	06/09/2025 21:45:56	0,00 \$US	paid	<a href="#">View</a>
NLSIDGPQ-0286	03/09/2025 11:49:37	0,01 \$US	paid	<a href="#">View</a>
NLSIDGPQ-0280	02/09/2025 17:19:58	1,20 \$US	open	<a href="#">View</a>
NLSIDGPQ-0082	03/08/2025 11:49:51	0,01 \$US	paid	<a href="#">View</a>
NLSIDGPQ-0080	02/08/2025 17:20:38	1,20 \$US	open	<a href="#">View</a>
NLSIDGPQ-0079	02/08/2025 17:14:39	1,20 \$US	open	<a href="#">View</a>
NLSIDGPQ-0078	02/08/2025 15:11:35	0,00 \$US	paid	<a href="#">View</a>
NLSIDGPQ-0009	02/07/2025 17:23:41	0,01 \$US	paid	<a href="#">View</a>

The 'Billing' section is also exclusive to the web version. It allows users to view their invoice history.

This button allows users to directly cancel their subscription or change the credit card associated with it. This section is managed directly by Stripe, the payment processor used by Thor.

Leon G. EN

- Overview
- System Status
- Connections List
- Accounts List
- Positions
- Trade Analysis
- Economic Calendar
- Billing
- Download**

Download

Asia Asia Closed (Weekend) Opens in 13h 53m

## Download

Currently available for Windows.

**Thor Client - Windows**  
 Installer for Windows 10/11 64-bit Compatible

Your system: Windows x64

[Download for Windows x64](#) [Copy link](#)

Another exclusive section, 'Download,' allows users to download the Windows application and quickly check if their current system is compatible with the software.

- Overview
- System Status
- Connections List
- Accounts List
- Positions
- Trade Analysis**
- Economic Calendar
- Billing
- Download

### Trade Analysis

PHOENIX-01616-007-PF

Refresh

Send to Deltalytix

#### Calendar

Trade history refreshes daily at 00:10 CEST (Sat included for Friday), except Sunday. Next refresh in 10h 33m.

Net PnL: -1920.00    Trades: 65    Win rate: 64.3%    Avg / trade: -29.54    Best day: 1380.00    Worst day: -2100.00

June 2025

Mon	Tue	Wed	Thu	Fri	Week PnL
<b>2</b> PnL: 515.00 Trades: 5 WR: 100.0%	<b>3</b> PnL: -1655.00 Trades: 11 WR: 63.6%	<b>4</b> PnL: 0.00 Trades: 0 WR: 0.0%	<b>5</b> PnL: 0.00 Trades: 0 WR: 0.0%	<b>6</b> PnL: 0.00 Trades: 0 WR: 0.0%	<b>0.00</b> 0 trades • 0.0%
<b>9</b> PnL: 0.00 Trades: 0 WR: 0.0%	<b>10</b> PnL: 150.00 Trades: 1 WR: 100.0%	<b>11</b> PnL: 120.00 Trades: 1 WR: 100.0%	<b>12</b> PnL: 60.00 Trades: 1 WR: 100.0%	<b>13</b> PnL: 180.00 Trades: 7 WR: 85.7%	<b>510.00</b> 10 trades • 90.0%
<b>16</b> PnL: 200.00 Trades: 2 WR: 100.0%	<b>17</b> PnL: 0.00 Trades: 0 WR: 0.0%	<b>18</b> PnL: 130.00 Trades: 1 WR: 100.0%	<b>19</b> PnL: -650.00 Trades: 5 WR: 40.0%	<b>20</b> PnL: 1380.00 Trades: 9 WR: 100.0%	<b>1060.00</b> 17 trades • 82.4%
<b>23</b> PnL: 210.00 Trades: 1 WR: 100.0%	<b>24</b> PnL: -285.00 Trades: 5 WR: 40.0%	<b>25</b> PnL: -195.00 Trades: 2 WR: 50.0%	<b>26</b> PnL: -2100.00 Trades: 14 WR: 64.3%	<b>27</b> PnL: 0.00 Trades: 0 WR: 0.0%	<b>-2350.00</b> 22 trades • 59.1%
<b>30</b> PnL: 0.00 Trades: 0 WR: 0.0%					<b>0.00</b> 0 trades • 0.0%

Cumulative PnL — June 2025

The final section exclusive to the website is the 'Trade Analysis' interface. This interface allows users to analyze the historical results of their trades

"This button allows users to send trades to 'Deltalytix,' a Thor partner that provides more detailed trade analysis. It is a paid partner service.



- Overview
- System Status ●
- Connections List
- Accounts List
- Positions
- Trade Analysis
- Economic Calendar
- Billing
- Download
- Save
- Help Center
- Report a Bug
- Logout

## Accounts List (4)

+ Add Account

Groups view  Add Group

## Default #1

Enabled Click to Disable Edit Delete

## Leader Account

T 28733502 (28733502)

## Follower Accounts

Follower	Leverage	Stop	TP	Active	
T DEMO5409103	1.3	-1000	1000	<input checked="" type="checkbox"/>	<a href="#">Edit</a> <a href="#">Share</a> <a href="#">Delete</a>
T DEMO5408981	1.3	-1000	1000	<input checked="" type="checkbox"/>	<a href="#">Edit</a> <a href="#">Share</a> <a href="#">Delete</a>
T DEMO5408960	1.3	-1000	1000	<input checked="" type="checkbox"/>	<a href="#">Edit</a> <a href="#">Share</a> <a href="#">Delete</a>

## Default #2

Enabled Click to Disable Edit Delete

## Leader Account

PHX00100 (100)

## Follower Accounts

Follower	Leverage	Stop	TP	Active	
PHX00120	1.3	-1000	1000	<input checked="" type="checkbox"/>	<a href="#">Edit</a> <a href="#">Share</a> <a href="#">Delete</a>

The only real difference is another web-exclusive feature: 'Groups.' Note that this option will soon be available in the Windows software as well. The concept is as follows:

Instead of having one account per row in the table, this feature allows users to group Leaders and Followers. A Leader can therefore have a group of Followers, rather than just a single one as in the other view.

# Liste des liens utiles

## Main Website



<https://thortradecopier.com>

Official platform to access Thor, view various information, and more.

## Windows Software



The Windows software can be downloaded here:

<https://thortradecopier.com/download>

## Documentation



Thor's documentation is available here:

<https://phoenixtraderfunding.com/thor/faq>. It is also accessible within the software and on the website under the 'Help Center' tab.

## Web App



The web app is available here: <https://app.thortradecopier.com>

# Industry Influencers and Opinion Leaders

Here is a quick list of influencers in the prop firm / Futures trade copier space. Their followers are highly likely to be interested in a trade copier like ours.

- **Jmu** - @jmutrades (X)
- **PropFirmEdge** - @Propfirmedge (X)
- **Prop Firm Journal**  
@PropFirmJournal (X)
- **Rhino | Rules** @RhinoRules17 (X)
- **Arman** @ArmanTradess (X)
- **RISE COLLECTIVE** @RiseNtwrk (X)
- **Harry** @ApparentlyTr8dr (X)
- **Patrick Wieland**  
<https://www.youtube.com/@PatrickWieland>
- **AceofTrades** @AceOfTradesss (X)
- **Prop Firm Media** @PropFirmMedia (X)
- **AW Trades** @aw\_trades\_ (X)
- **Prop Markets** @PropFirmMarkets (X)
- **JadeCap** @jadecap\_ (X)
- **LeDhesi** @dhesi\_trades (X)
- **Nutty Bar Trading** @nuttybartrading (X)
- **UncleBugatti** @UncleBugatti (X)
- **Matt** @TradersParadise (X)
- **FuturesFarming** @FarmforAnswers (X)
- **Zeus Tradez** @ZeusTradez (X)
- **sheentrades** @sheentrades (X)